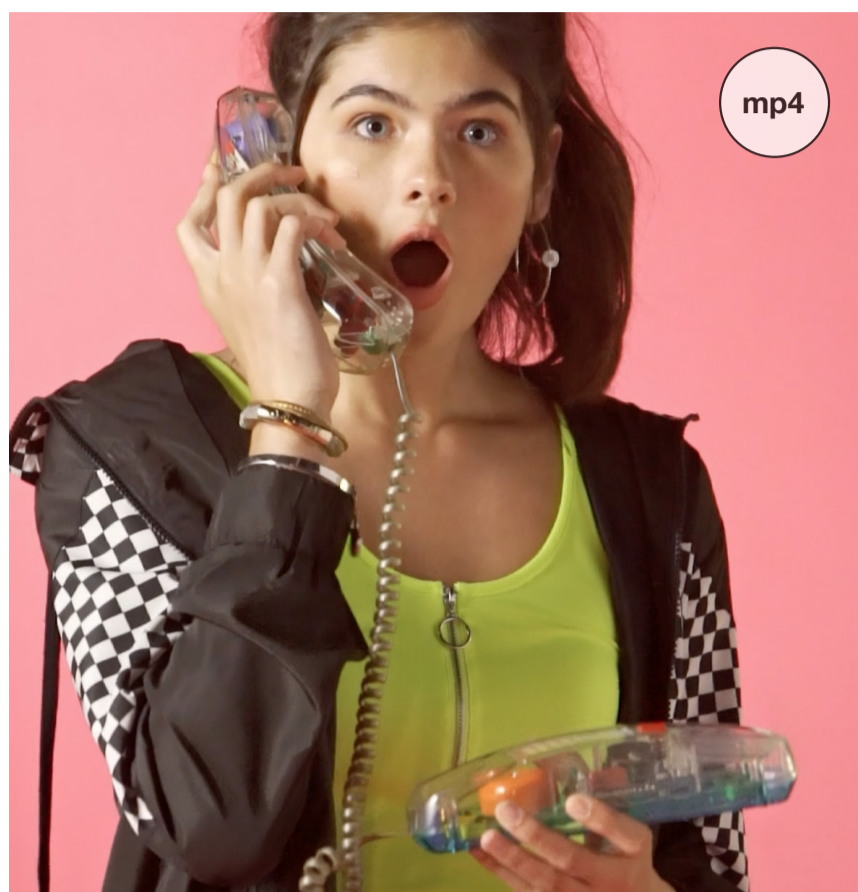


TRIVIA CAMPAIGN | look & feel



TRIVIA CAMPAIGN opt-in/day 1

Headline: Play '90s Totally Tubular Trivia!

The '90s are calling, and they want Totally Tubular Trivia! For the next 12 days, we'll text you a trivia question about the decade that was all that and a bag of chips. Each time you answer a question, you can enter for a chance to win a store gift card! Reply **TOTALLY** to this message to get in on the fun: <http://ir1s.mobi/90STRIVIA>

QUESTION 1 - MON 7/29 (NO IMAGE)

Let's roll! It's Day #1 of the '90s Totally Tubular Trivia game. Here's your first question.

Which toy did you NOT see in a '90s kid's toy box?

A. Beanie Babies

B. Tamagotchis

C. PlayStation 4

Reply A, B or C by Midnight CT to find out the answer.

(RESPONSE)

Boo-ya! The answer is C, PlayStation 4. Enter to win a store gift card—and every time you answer a trivia card for more chances to win: <http://ir1s.mobi/90STRIVIA>

QUESTION 2 - TUES 7/30

This month marks the 50th anniversary of the Apollo 11 moon landing. In that spirit, what was the name of the rover that was part of NASA's 1997 Pathfinder mission to Mars?

- A. Red Rover
- B. Sojourner
- C. Spirit

Reply A, B or C by Midnight CT to find out the answer.

(RESPONSE)

You rocket! The rover's name was Sojourner. Don't miss out on your chance to win a store gift card to get your own space gear. Enter now and every time you answer a trivia question for more chances to win: <http://ir1s.mobi/90STRIVIA>



QUESTION 3 - WED 7/31

What sport did Forrest Gump play in college?

- A. baseball
- B. football
- C. ping pong

Reply A, B or C by Midnight CT to find out the answer.

(RESPONSE)

Touchdown! Forrest Gump played football in college. Try to score yourself a store gift card and every time you answer a trivia question for more chances to win:

<http://ir1s.mobi/90STRIVIA>



QUESTION 4 - THURS 8/1

Schwing! What '90s movie starring Mike Myers and Dana Carvey was based on Saturday Night Live skits?

- A. Empire Records
- B. Bill & Ted's Bogus Journey
- C. Wayne's World

Reply A, B or C by Midnight CT to find out the answer.

REPLY TEXT AFTER ANSWER

Excellent! Wayne's World was based off of SNL skits. Now enter to win a store gift card—and every time you answer a trivia question for more chances to win!

<http://ir1s.mobi/90STRIVIA>



QUESTION 5 - FRI 8/2

QUESTION: What was the original name of Buzz Lightyear from Toy Story?

- A. NASA Ned
- B. Lunar Larry**
- C. Astro Allen

Reply A, B or C by Midnight CT to find out the answer.

REPLY TEXT AFTER ANSWER

You've got a friend in us! Buzz's name was originally Lunar Larry. A store gift card is within your reach—enter now and every time you answer a trivia question for more chances to win: <http://ir1s.mobi/90STRIVIA>



QUESTION 6 - SAT 8/3

Which '90s Nickelodeon show slimed people with vanilla pudding, oatmeal, applesauce and green food coloring?

- A. All That
- B. Double Dare**
- C. Salute Your Shorts

Reply A, B or C by Midnight CT to find out the answer.

REPLY TEXT AFTER ANSWER

We *Double Dare* you to try to win a store gift card: <http://ir1s.mobi/90STRIVIA> Don't forget to enter every time you answer a trivia question for more chances to win!



QUESTION 7 - SUN 8/4

Which rapper popularized tracksuits in the '90s?

- A. Busta Rhymes
- B. Ice Cube
- C. Jay Z**

Reply A, B or C by Midnight CT to find out the answer.

REPLY TEXT AFTER ANSWER

Word up, it was Jay Z! Enter for a chance to win a store gift card here to go get your own fly suit: <http://ir1s.mobi/90STRIVIA> Don't forget to enter every time you answer a trivia question for more chances to win!



QUESTION 8 - MON 8/5

QUESTION: Featured in the 1998 film *You've Got Mail*, what online service offered the gateway to the World Wide Web?

- A. Google
- B. AOL**
- C. Napster

Reply A, B or C by Midnight CT to find out the answer.

REPLY TEXT AFTER ANSWER

Ding! AOL was the online service. Enter for your chance to win a store gift card here: <http://ir1s.mobi/90STRIVIA> Don't forget to enter every time you answer a trivia question for more chances to win!



QUESTION 9 - TUES 8/6

Which comedian starred in the Polaroid Captiva commercial in the '90s?

- A. Garry Shandling
- B. Jerry Seinfeld
- C. Sinbad**

Reply A, B or C by Midnight CT to find out the answer.

REPLY TEXT AFTER ANSWER

Oh, snap! Sinbad is correct. Try to capture yourself a store gift card here: <http://ir1s.mobi/90STRIVIA> Don't forget to enter every time you answer a trivia question for more chances to win!



QUESTION 10 - WED 8/7

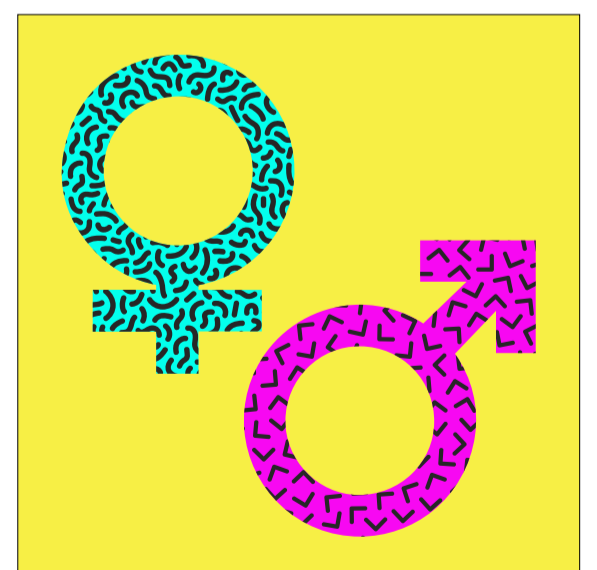
What 1994 fragrance allowed men and women to smell gender neutral?

- A. Clinique Happy
- B. Calvin Klein One**
- C. Elizabeth Arden Sunflowers

Reply A, B or C by Midnight CT to find out the answer.

REPLY TEXT AFTER ANSWER

We're bout it! Men and women wore Calvin Klein One in the '90s. Try not to miss out on a chance to win a store gift card here: <http://ir1s.mobi/90STRIVIA> Don't forget to enter every time you answer a trivia question for more chances to win!



QUESTION 11 - THURS 8/8

QUESTION: What haircut was all that and a bag of chips in the '90s because of the TV show, Friends?

- A. The Phoebe
- B. The Monica
- C. The Rachel

Reply A, B or C by Midnight CT to find out the answer.

REPLY TEXT AFTER ANSWER

We'll be there for you! The popular haircut was called The Rachel. Now try to win a store gift card here:

<http://ir1s.mobi/90STRIVIA> Don't forget to enter every time you answer a trivia question for more chances to win!



QUESTION 12 - FRI 8/9

What song was #1 on the Billboard 100 in 1997?

- A. "Baby One More Time" by Britney Spears
- B. "My Heart Will Go On" by Celine Dion
- C. "Genie in a Bottle" by Christina Aguilera

Reply A, B or C by Midnight CT to find out the answer.

REPLY TEXT AFTER ANSWER

This ship won't sink! "My Heart Will Go On" by Celine Dion hit #1 in 1997 thanks to the movie, *Titanic*. Thanks for playing, and don't miss your chance to win one of the five BIG store gift cards: <http://ir1s.mobi/90STRIVIA>

