

34th Street Right-Of-Way Native Streetscape Planting Austin, Texas

This drawing and the design shown is the property of Stricklin Design. The reproduction, copying, or use of this drawing without the written consent of Stricklin Design is prohibited, and any infringement will be subject to legal action. © Copyright 2011 Stricklin Design

Issue / Revisions		
No.	Date	Description
1	10.03.12	Check Set
2	10.03.12	DD - Utility Revisions
3	10.15.12	CD - Austin Uro. Rev.



Drawing Title

Landscape Plan

Issue Date:
Project Number:
Reviewed By: RRS
Drawn By: RRS

Drawing Number

L2.01



Austin, Texas

Issue / Revisions

Sec



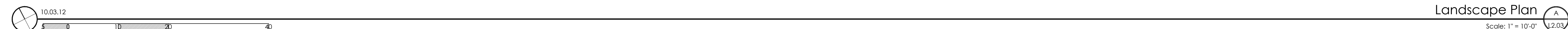
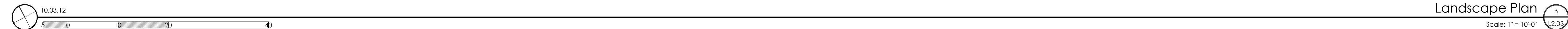
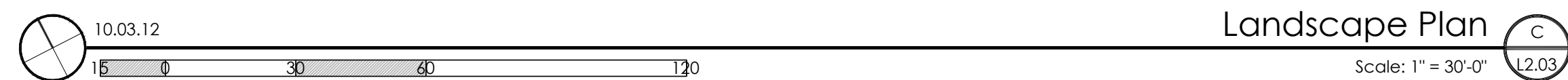
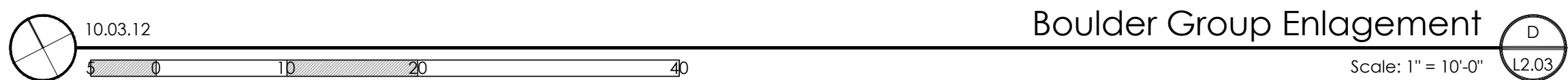
Issue Date:

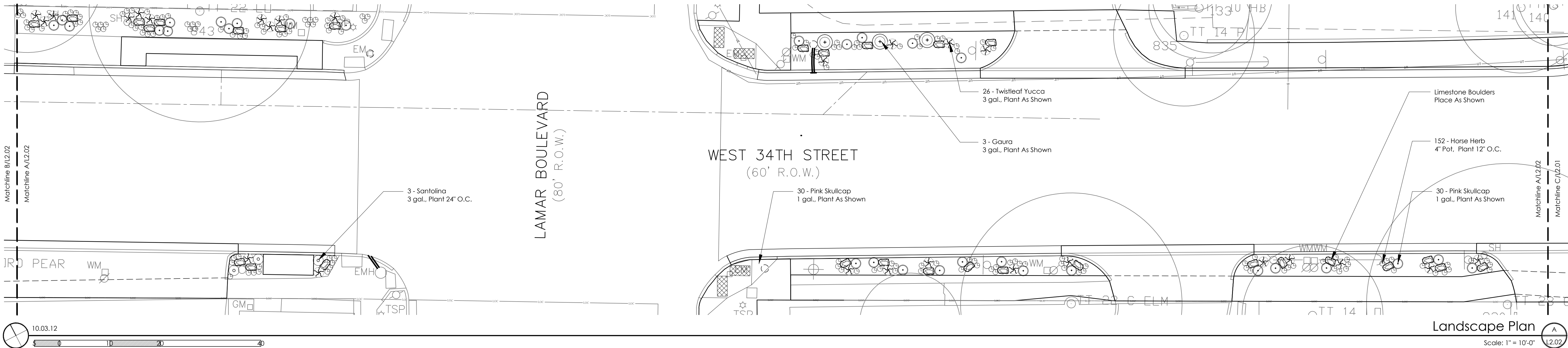
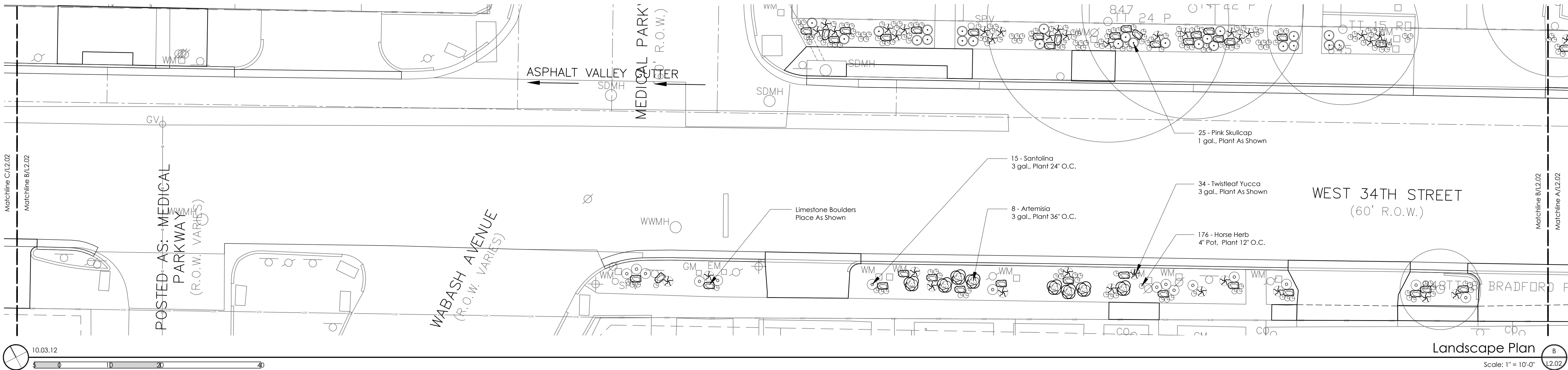
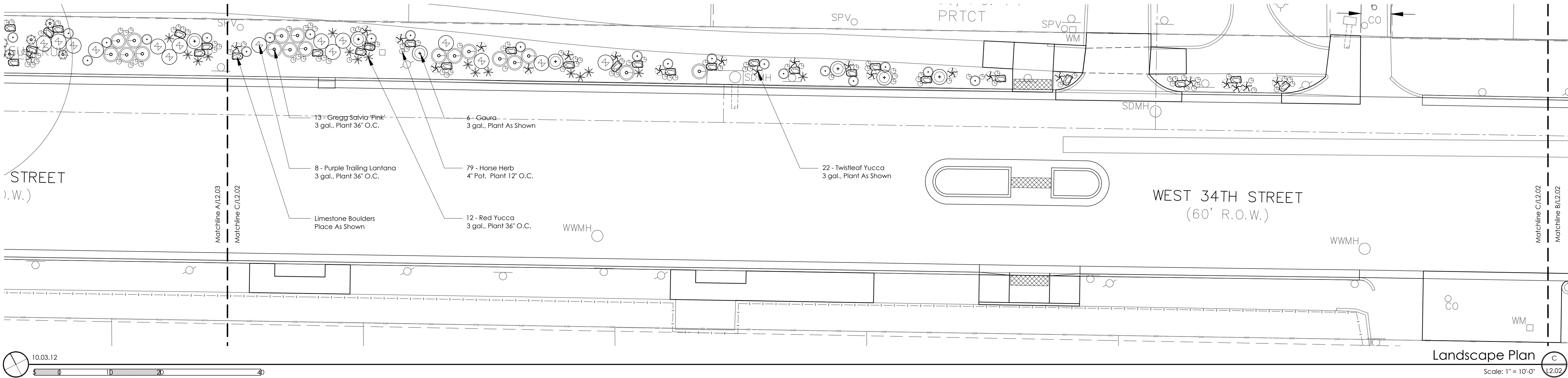
Project Number

Reviewed By: RRS

Drawn By: RRS

Drawing Number





34th Street Right-Of-Way Native Streetscape Planting Austin, Texas

This drawing and the design shown is the property of Stricklin Design. The reproduction, copying, or use of this drawing without the written consent of Stricklin Design is prohibited, and any infringement will be subject to legal action. © Copyright 2011 Stricklin Design

Issue / Revisions		
No.	Date	Description
1	10.03.12	Check Set
2	10.03.12	DD - Utility Revisions
3	10.15.12	CD - Austin Uro. Rev.



Drawing Title

Landscape Plan

Issue Date:
Project Number:
Reviewed By: RRS
Drawn By: RRS

Drawing Number

L2.02

Landscape Notes:

Preparation

Landscape contractor and representative of owner/city shall be responsible for verifying the correct location of all underground utilities, pipes, structures, and line runs in the field prior to the installation of any plant materials.

Coordination

Landscape contractor shall be responsible for any coordination with other contractors on site as required to accomplish all planting operations.

Verification

Contractor is responsible for all quantities per drawings and specifications by the landscape architect. Plant quantities have been provided as a convenience only and shall not be considered absolute. Landscape architect to be notified if discrepancies occur. Otherwise, the contractor is to bid their own verified quantities.

Grading & Drainage

Landscape architect assumes no responsibility for failure of any hardscape amenity such as walks, entrances to structures, and planter beds formed or enclosed by edging and flatwork, which do not drain due to improper set up of elevations during construction. Landscape contractor is responsible for fine grading and verifying that the site has positive drainage prior to and after planting.

Standards

All plant material shall conform to the sizes given in the plant schedule and shall be nursery grown in accordance with the "USA Standard for Nursery Stock", latest edition. All planting shall be in accordance with standard American Association of Nurserymen procedures and specifications. Any plant substitution shall be approved by landscape architect.

Plant Locations

Refer to planting plan for planting locations and plant schedule for specifications.

Weed Control

Proposed planting beds which contain nutsedge (Cyperus spp.)or bermuda grass (Cynodon spp.)shall be treated with concentrated Glyphosate solution prior to preparation for planting. Repeated application is necessary for control. Rest prepared planting beds for two weeks to allow regrowth of weeds, then apply concentrated Glyphosate solution to any regrowth. Follow manufacturer's instructions.

Planting Beds

Landscape Contractor shall fully excavate prepared planting beds as required to accommodate a a full 6" of prepared soil and 3" of hardwood mulch. All beds are to be left 1" below finished grade of adjacent pavement by general contractor, removing all unwanted plant material and debris. Landscape contractor responsible for maintaining positive drainage of bed area. Clean, native topsoils from excavations may be spread on nearby areas to be sodded or seeded. Stones larger than 1" in diameter shall be removed and disposed of offsite. Install Lawn & Garden soil mix from Texas Disposal Systems (TDS) - Gardenville Austin, Texas (or approved equal) to a minimum depth of 6". Till to 8" depth. Apply 3" shredded hardwood mulch.

Planting Soil Mixture

Planting soil mixture to be as follows:

Beds at Grade: 6" depth Lawn & Garden soil mix; Till to 8" depth

Raised Planters: 50 / 50 mix of Potting Soil and TOP Compost

Raised Planters with Roses or Azaleas: Rose Soil

Pots / Containers: Potting Soil

All planting soil mixes available from TDS - Gardenville Austin, Texas

Fertilizer

Add fertilizer tablets to all trees and shrubs, one tablet per 1/2" caliper for trees and one tablet per 12" of height or spread for each shrub at installation. Fertilize ground cover and seasonal color with 10-10-10 fertilizer at 1" actual nitrogen per 1000sf. Fertilize turf grass with 16-20-0 fertilizer at 1# actual nitrogen per 1000sf.

Pruning

All trees to be pruned at installation to remove dead and unsightly limbs. All trees are to match in height, spread, and clear trunk and shall have straight trunks.

Mulch

Mulch beds and tree wells to 3" depth with a shredded hardwood mulch (min. 80% decomposed).

Topsoil

Topsoil shall be natural, fertile, friable soil possessing characteristics of representative productive soils in the vicinity. It shall not be excessively acid or alkaline or contain toxic substances which may be harmful to plant growth. Topsoil shall be without admixture of subsoil and shall contain a minimum of lumps, stone, stumps, roots of similar substances one inch or more in diameter. Topsoil shall be free from weeds and other noxious materials. Topsoil shall not be stripped, collected or deposited while wet. Spread topsoil where necessary to fill low areas to achieve positive drainage.

Staking, Guying & Tree Staples

All trees are to be staked and guyed or stapled as shown through the one year warranty at which time the owner shall determine if removal is necessary (refer to planting details).

Maintenance

Landscape contractor shall be responsible for maintaining all landscaping in accordance with standard horticultural procedures, including irrigation as necessary, until substantial completion and acceptance by the owner.

Turf Grass

Finish grade to be 1" below all paving, curbs, steel edging, etc.; roll both directions after installation. Fill in all low areas and lower high areas. All turf grass areas to have 100% positive drainage. Install turf grass as specified in specifications. Insure turf grass receives proper irrigation during specified maintenance period.

Seed Bed Preparation & Seeding

Establish weed control. Apply 2" compost and till to 3" depth to incorporate. Rake smooth and broadcast seed. Press seed into soil with sod roller. Apply 1" shredded hardwood mulch.

IMPORTANT!!!

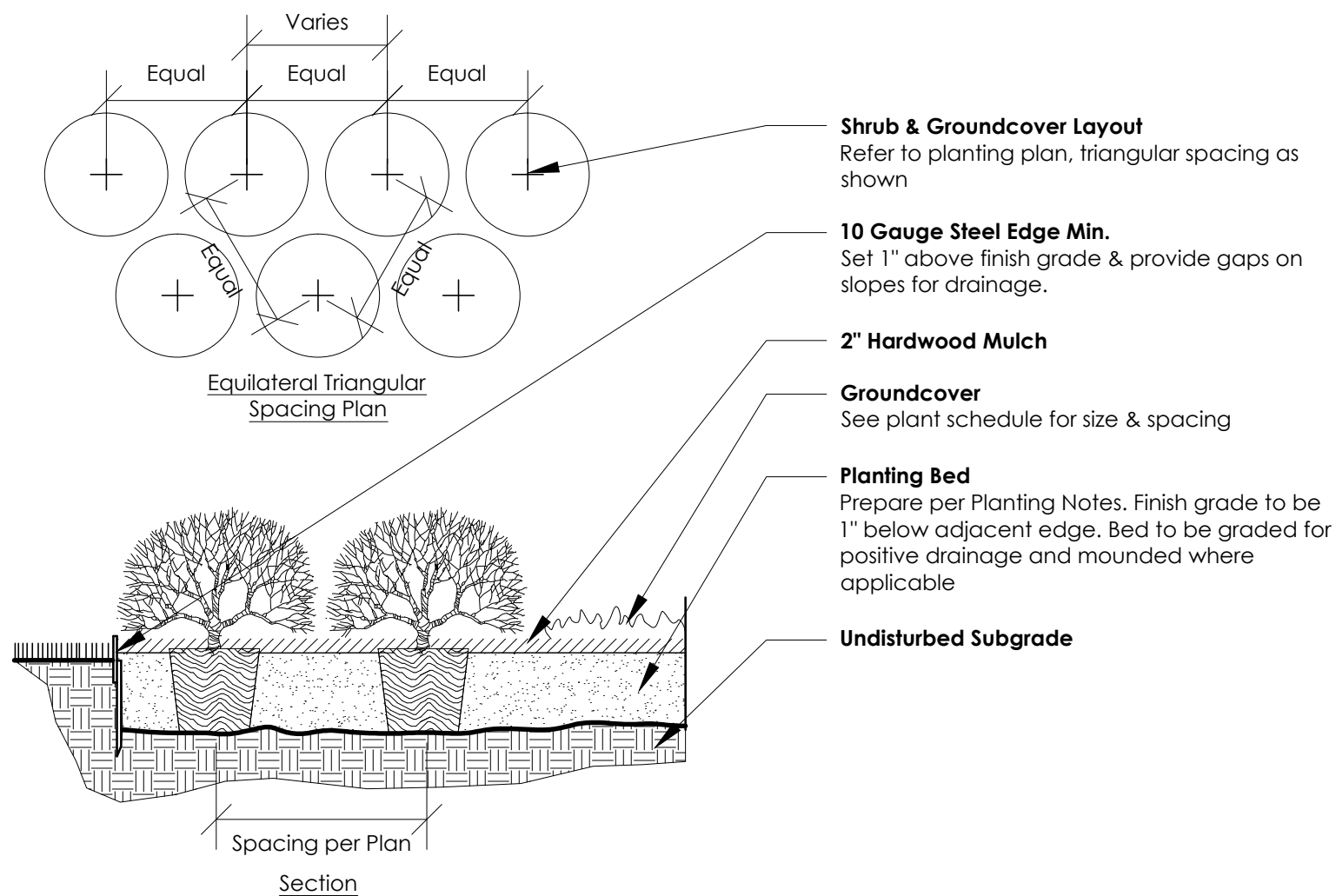
Trees

All trees shall comply with the latest amended edition of the "American Nursery Association Recommended Tree Specifications."

Quantities

All contractors to verify and bid their own quantities. If any discrepancies are found on plans, notify landscape architect immediately.

Plant Schedule					
Plant Quantity	Common Name <i>Botanical name</i>	Size Min.	Height Min.	Spread Min.	Comments
Shrubs & Perennials					
8	Powis Castle Artemisia <i>Artemisia 'Powis Castle'</i>	3 gal.	4"	8"	Full & Well Rooted Plant 36" o.c., Plant as Shown L2.02
29	Gaura <i>Gaura lindheimeri</i>	3 gal.	8"	8"	Full & Well Rooted Plant as Shown
43	Red Yucca <i>Hesperaloe parviflora</i>	3 gal.	12"	18"	Full & Well Rooted Plant 24" o.c., Triangular Spacing
25	Purple Trailing Lantana <i>Lantana montevidensis</i>	1 gal.	n/a	12"	Full & Well Rooted Plant 36" o.c., Triangular Spacing
17	Rock Rose <i>Pavonia lasiopetala</i>	3 gal.	12"	8"	Full & Well Rooted Plant 30" o.c., Triangular Spacing
41	Lavender Cotton Santolina <i>Santolina chamaecyparissus</i>	3 gal.	4"	8"	Full & Well Rooted Plant 24" o.c., Triangular Spacing
29	Pink Gregg's Salvia <i>Salvia greggii 'Pink'</i>	3 gal.	8"	8"	Full & Well Rooted Plant 36" o.c., Triangular Spacing
159	Pink Skullcap <i>Scutellaria suffrutescens</i>	1 gal.	6"	8"	Full & Well Rooted Plant 24" o.c., Triangular Spacing
141	Twistleaf Yucca <i>Yucca rupicola</i>	3 gal.	12"	12"	Full & Well Rooted Plant 24" o.c.
Groundcovers					
732 (37 Flats)	Horse Herb <i>Calyptocarpus vialis</i>	Pot	n/a	6"	Full & Well Rooted Plant 12" o.c., Triangular Spacing
Seed					
2,600 ft² (2 lb. total)	Butterfly Retreat Mix <i>Multiple Species; See www.seedsource.com</i>	Seed	n/a	n/a	Seed into Prepared Seedbed by Source Recommendations Source: Native American Seed Company



Shrub & Groundcover Planting

Scale: 1/2" = 1'-0"

A
L4.01



1012 Cripple Creek Drive
Austin, TX 78758
(512) 739-4757
www.stricklindesign.com

34th Street Right-Of-Way Native Streetscape Planting Austin, Texas

This drawing and the design shown is the property of Stricklin Design. The reproduction, copying, or use of this drawing without the written consent of Stricklin Design is prohibited, and any infringement will be subject to legal action. © Copyright 2011 Stricklin Design

Issue / Revisions

No.	Date	Description
1	10.03.12	Check Set
2	10.03.12	DD - Utility Revisions
3	10.15.12	CD - Austin Uro. Rev.

Seal



Drawing Title

Planting Details & Notes

Issue Date:

Project Number:

Reviewed By: RRS

Drawn By: RRS

Drawing Number

L4.01

34th Street Right-Of-Way
Native Streetscape Planting
Austin, Texas

This drawing and the design shown is the property of Stricklin Design. The reproduction, copying, or use of this drawing without the written consent of Stricklin Design is prohibited, and any infringement will be subject to legal action. © Copyright 2011 Stricklin Design

Issue / Revisions

No.	Date	Description
1	10.03.12	Check Set
2	10.03.12	DD - Utility Revisions
3	10.15.12	CD - Austin Uro. Rev.

Seal



Drawing Title

COA Traffic
Controls 804S

Issue Date:

Project Number:

Reviewed By: RRS

Drawn By: RRS

Drawing Number

L3.01

1. ALL SETUPS SHALL BE IN ACCORDANCE WITH THE CURRENT ADDITION OF THE TEXAS MANUAL ON UNIFORM TRAFFIC CONTROL DEVICES AND THE CITY OF AUSTIN TRANSPORTATION CRITERIA MANUAL.

2. TO DETERMINE APPROPRIATE DEVICES AND SIGN SIZES TO BE USED, REFER TO STANDARD 804S-5, SHEETS 5, 6 AND 7 OF 11.

3. FOR INTERMEDIATE-TERM SITUATIONS, WHEN IT IS NOT FEASIBLE TO REMOVE AND RESTORE PAVEMENT MARKINGS, THE CHANNELIZATION MUST BE MADE DOMINANT BY USING A VERY CLOSE DEVICE SPACING. THIS IS ESPECIALLY IMPORTANT IN LOCATIONS OF CONFLICTING INFORMATION, SUCH AS WHERE TRAFFIC IS DIRECTED OVER A DOUBLE YELLOW CENTERLINE. IN SUCH LOCATIONS, A MAXIMUM CHANNELIZING DEVICE SPACING OF 3 m (10') IS REQUIRED.

4. FOR LONG TERM STATIONARY WORK, ALL CONFLICTING PAVEMENT MARKINGS MUST BE REMOVED AND CENTERLINE STRIPING PROVIDED WHERE TWO WAY TRAFFIC IS IN ADJACENT LANES.

5. FOR TEMPORARY PAVEMENT MARKING REQUIREMENTS SEE STANDARD 804S-3.

6. FOR ONE-WAY AND MULTI-LANE ROADWAYS THE 'LANE BLOCKED' SIGN MAY BE USED IN LIEU OF THE 'LANE CLOSED AHEAD' SIGN. THE NUMBER OF DIGITS ON THE SIGN SHALL NOT BE GREATER THAN THE NUMBER OF LANES PRESENT ON THE ROADWAY. THE 'X' SHALL BE PLACED UNDER THE NUMBER OF LANE(S) BLOCKED.

7. FOR FLAGGING OPERATION REQUIREMENTS SEE STANDARD 804S-2.

8. CONTRACTOR SHALL PROVIDE SIDEWALK CLOSURES, CROSSWALK CLOSURES OR WALKWAY BYPASS WHEREVER PEDESTRIAN MOVEMENTS ARE AFFECTED BY CONSTRUCTION ACTIVITIES. ALL SIDEWALKS AND CROSSWALKS SHALL BE ACCESSIBLE WHEN CONTRACTOR IS NOT WORKING UNLESS APPROVED BY THE TRANSPORTATION DIVISION.

9. FOR EXCAVATION PROTECTION AND SAFETY FENCE REQUIREMENTS SEE STANDARD 804S-4.

10. THE USE OF ARROW DISPLAYS ARE REQUIRED ON ALL LANE CLOSURES. THE CONTRACTOR SHALL PROVIDE ONE (1) STAND-BY UNIT IN GOOD WORKING CONDITION AT THE JOB SITE, READY FOR USE IF THE OPERATION REQUIRES 24-HOUR A DAY LANE CLOSURE SET-UPS.

CITY OF AUSTIN DEPARTMENT OF PUBLIC WORKS	GENERAL NOTES	STANDARD NO. 804S-1 8 OF 9
RECORD COPY SIGNED BY KERI JUAREZ	01/04/11 ADOPTED	THE ARCHITECT/ENGINEER ASSUMES RESPONSIBILITY FOR APPROPRIATE USE OF THIS STANDARD.

ADVANCED WARNING SIGNS
AND SPACING SIMILAR FOR
OPPOSING TRAFFIC.

SEE NOTES 3 AND 4
ON SHEET 8 OF 9

SEE SHEET 8 OF 9 FOR GENERAL
NOTES AND SHEET 9 OF 9
FOR DEVICE SPACING.

CITY OF AUSTIN
DEPARTMENT OF PUBLIC WORKS

RECORD COPY SIGNED
BY KERI JUAREZ

01/04/11
ADOPTED

THE ARCHITECT/ENGINEER ASSUMES
RESPONSIBILITY FOR APPROPRIATE USE
OF THIS STANDARD.

TYPICAL TRAFFIC CONTROL PLAN
FOR SHIFTING TRAFFIC

STANDARD NO.
804S-1
6 OF 9

SEE SHEET 8 OF 9 FOR GENERAL
NOTES AND SHEET 9 OF 9
FOR DEVICE SPACING.

SEE SHEET 8 OF 9 FOR GENERAL
NOTES AND SHEET 9 OF 9
FOR DEVICE SPACING.

CITY OF AUSTIN
DEPARTMENT OF PUBLIC WORKS

RECORD COPY SIGNED
BY KERI JUAREZ

01/04/11
ADOPTED

THE ARCHITECT/ENGINEER ASSUMES
RESPONSIBILITY FOR APPROPRIATE USE
OF THIS STANDARD.

BYPASS WALKWAY, SIDEWALK
AND CROSSWALK CLOSURES

STANDARD NO.
804S-1
4 OF 9

SEE SHEET 8 OF 9 FOR GENERAL
NOTES AND SHEET 9 OF 9
FOR DEVICE SPACING.

SEE SHEET 8 OF 9 FOR GENERAL
NOTES AND SHEET 9 OF 9
FOR DEVICE SPACING.

CITY OF AUSTIN
DEPARTMENT OF PUBLIC WORKS

RECORD COPY SIGNED
BY KERI JUAREZ

01/04/11
ADOPTED

THE ARCHITECT/ENGINEER ASSUMES
RESPONSIBILITY FOR APPROPRIATE USE
OF THIS STANDARD.

ONE WAY ARTERIAL
TWO-LANE CLOSURE

STANDARD NO.
804S-1
2 OF 9

Typical Transition Lengths and
Suggested Maximum Spacing of Devices

Speed KMPH	Posted Speed MPH	Formula	Minimum Desirable Taper Lengths (L) Meters (Feet)	3.0/(10) Offset Meters (feet)	3.3/(11) Offset Meters (feet)	3.6/(12) Offset Meters (feet)	On a taper Meters (feet)	On a tangent Meters (feet)	"X" Dimension
50	30	L=WS ² 60	45 (150)	50 (165)	55 (180)	9 (30)	15-20 (60-75)	40 (120)	
55	35		65 (205)	70 (225)	75 (245)	10 (35)	25-25 (70-90)	50 (160)	
65	40		80 (265)	90 (295)	100 (330)	12 (40)	25-30 (80-100)	75 (240)	
70	45	L=WS	135 (450)	150 (495)	165 (540)	13 (45)	25-30 (90-110)	100 (320)	
80	50		180 (600)	200 (660)	220 (720)	18 (60)	40-45 (120-150)	120 (400)	
90	55		165 (550)	185 (605)	200 (660)	16 (55)	35-40 (110-140)	150 (500)	
95	60	L=WS	180 (600)	200 (660)	220 (720)	18 (60)	40-45 (120-150)	180 (600)	
105	65		195 (650)	215 (715)	235 (780)	19 (65)	40-50 (130-165)	210 (700)	
115	70		215 (700)	235 (770)	255 (840)	21 (70)	45-55 (140-175)	240 (800)	

LEGEND

- Channelizing devices
- Trailer mounted flashing arrow board
- Flagger

CITY OF AUSTIN DEPARTMENT OF PUBLIC WORKS	DEVICE SPACING	STANDARD NO. 804S-1 8 OF 9
RECORD COPY SIGNED BY KERI JUAREZ	01/04/11 ADOPTED	THE ARCHITECT/ENGINEER ASSUMES RESPONSIBILITY FOR APPROPRIATE USE OF THIS STANDARD.

2 SIGNS
(BACK-TO-BACK)

SEE NOTES 3
AND 4 ON
SHEET 8 OF 9

SEE SHEET 8 OF 9 FOR GENERAL
NOTES AND SHEET 9 OF 9
FOR DEVICE SPACING.

CITY OF AUSTIN
DEPARTMENT OF PUBLIC WORKS

RECORD COPY SIGNED
BY KERI JUAREZ

01/04/11
ADOPTED

THE ARCHITECT/ENGINEER ASSUMES
RESPONSIBILITY FOR APPROPRIATE USE
OF THIS STANDARD.

TYPICAL TRAFFIC CONTROL PLAN
FOR SHIFTING TRAFFIC

STANDARD NO.
804S-1
7 OF 9

ADVANCED WARNING SIGNS
AND SPACING SIMILAR FOR
OPPOSING TRAFFIC.

SEE SHEET 8 OF 9 FOR GENERAL
NOTES AND SHEET 9 OF 9
FOR DEVICE SPACING.

CITY OF AUSTIN
DEPARTMENT OF PUBLIC WORKS

RECORD COPY SIGNED
BY KERI JUAREZ

01/04/11
ADOPTED

THE ARCHITECT/ENGINEER ASSUMES
RESPONSIBILITY FOR APPROPRIATE USE
OF THIS STANDARD.

COLLECTOR/RESIDENTIAL
LANE CLOSURES

STANDARD NO.
804S-1
5 OF 9

SEE SHEET 8 OF 9 FOR GENERAL
NOTES AND SHEET 9 OF 9
FOR DEVICE SPACING.

SEE SHEET 8 OF 9 FOR GENERAL
NOTES AND SHEET 9 OF 9
FOR DEVICE SPACING.

CITY OF AUSTIN
DEPARTMENT OF PUBLIC WORKS

RECORD COPY SIGNED
BY KERI JUAREZ

01/04/11
ADOPTED

THE ARCHITECT/ENGINEER ASSUMES
RESPONSIBILITY FOR APPROPRIATE USE
OF THIS STANDARD.

TWO WAY, DIVIDED ARTERIAL
ONE LANE CLOSURE

STANDARD NO.
804S-1
3 OF 9

SEE SHEET 8 OF 9 FOR GENERAL
NOTES AND SHEET 9 OF 9
FOR DEVICE SPACING.

SEE SHEET 8 OF 9 FOR GENERAL
NOTES AND SHEET 9 OF 9
FOR DEVICE SPACING.

CITY OF AUSTIN
DEPARTMENT OF PUBLIC WORKS

RECORD COPY SIGNED
BY KERI JUAREZ

01/04/11
ADOPTED

THE ARCHITECT/ENGINEER ASSUMES
RESPONSIBILITY FOR APPROPRIATE USE
OF THIS STANDARD.

ARTERIAL ONE LANE CLOSURE

STANDARD NO.
804S-1
1 OF 9